

KENNEDY VALVE

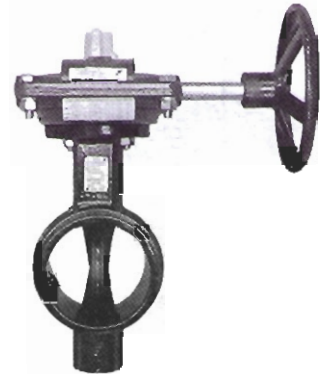
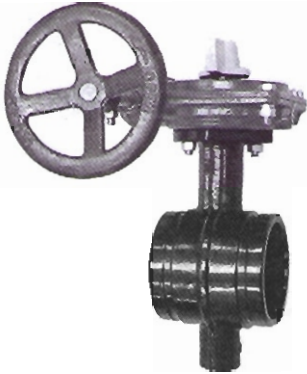


Division of McWane, Inc.
1021 E. Water St., Elmira, NY 14901 (607) 734-2211



GROOVED END BUTTERFLY VALVES 2-1/2" to 8"

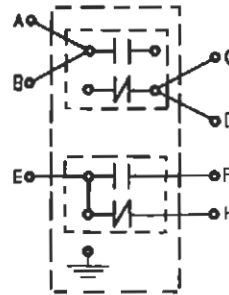
Figure 01G - 300psi with Supervisory Tamper Switch



UL 1091 Listed for Indoor or Ambient Outdoor Service Without Direct Exposure to Precipitation or Being Submerged

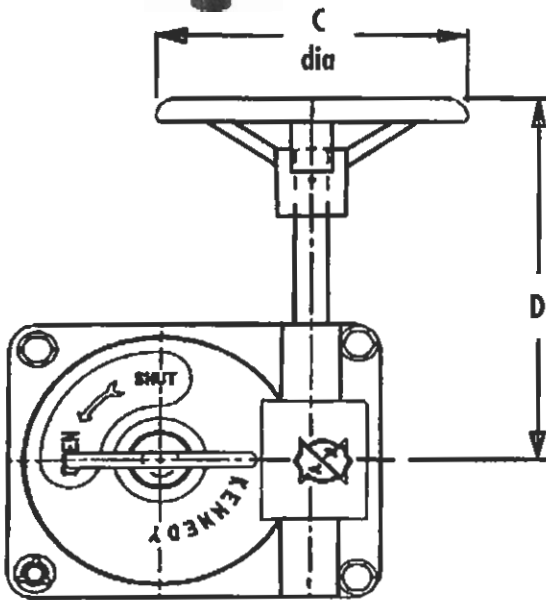
Supervisory Tamper Switch & Auxiliary Switch

Electrical Specs, Max:
28 VDC, 120 VAC, 0.25 AMP

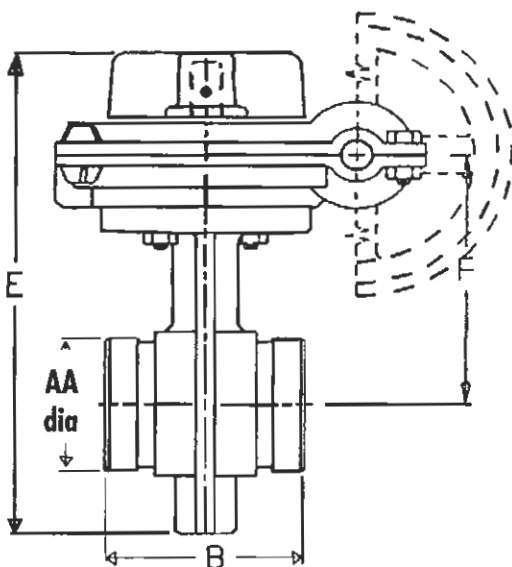


Tamper Switch

Auxiliary Switch



WIRE	COLOR	MODE
A	BLACK	N/O
B	BLACK	N/O
C	BLUE	COMMON
D	BLUE	COMMON
E	BLUE/WHITE	COMMON
F	BLACK/WHITE	N/O
H	RED	N/C



SIZE	AA dia	B	C	D	E	F	Wt#
2.5"	2.85	3.81	6.0	7.6	10.30	5.35	16
3"	3.47	3.82	6.0	7.6	10.77	5.58	20
4"	4.47	4.57	6.0	7.6	12.86	6.68	24
6"	6.61	5.83	6.0	7.6	15.73	8.36	37
8"	8.61	5.27	6.0	7.6	17.56	9.28	43

- Upper & Lower Shafts: 416 Stainless Steel
- Body Coating: Fusion Bonded Nylon 11
- Disc Encapsulation Material: SBR



KENNEDY VALVE



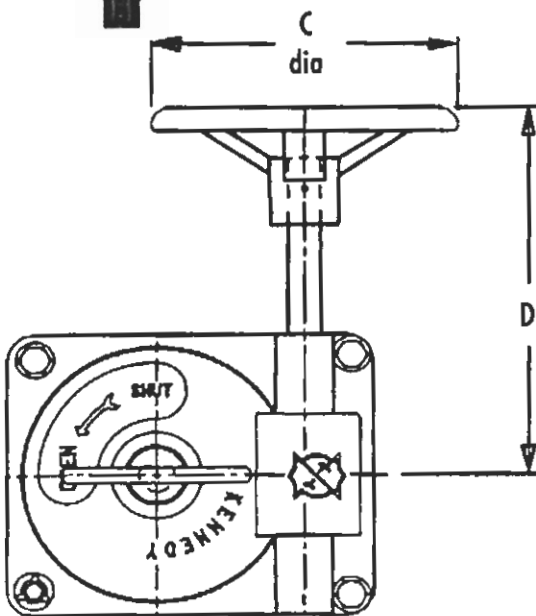
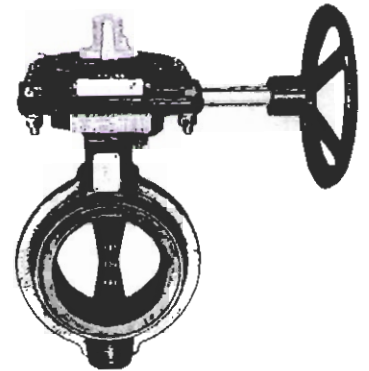
Division of McWane, Inc.
1021 E. Water St., Elmira, NY 14901 (607) 734-2211



WAFER END BUTTERFLY VALVES 2-1/2" to 8"

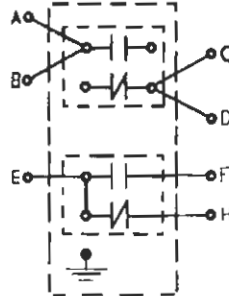
Figure 01W - 300psi with Supervisory Tamper Switch

UL 1091 Listed for Indoor or Ambient Outdoor Service Without Direct Exposure to Precipitation or Being Submerged



Supervisory Tamper Switch & Auxiliary Switch

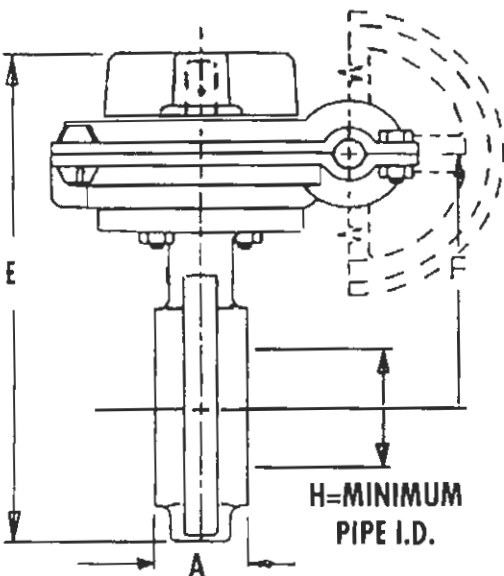
Electrical Specs, Max:
28 VDC, 120 VAC, 0.25 AMP



Tamper Switch

Auxiliary Switch

WIRE	COLOR	MODE
A	BLACK	N/O
B	BLACK	N/O
C	BLUE	COMMON
D	BLUE	COMMON
E	BLUE/WHITE	COMMON
F	BLACK/WHITE	N/O
H	RED	N/C

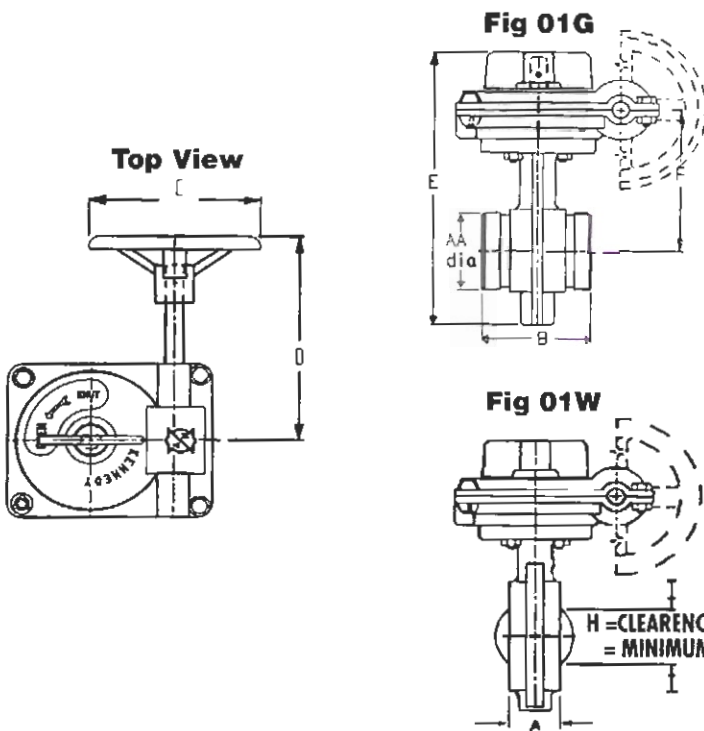


SIZE	A	C	D	E	F	H	Wt#
2.5"	1.81	6.0	7.6	10.30	5.35	1.72	20
3"	1.81	6.0	7.6	10.77	5.58	2.39	20
4"	2.05	6.0	7.6	12.88	6.68	3.31	25
6"	2.21	6.0	7.6	15.73	8.36	5.60	34
8"	2.36	6.0	7.6	17.56	9.28	7.49	44

- Upper & Lower Shafts: 416 Stainless Steel
- Body Coating: Fusion Bonded Nylon 11
- Disc Encapsulation Material: SBR



01G / 01W – BUTTERFLY VALVE INSTALLATION INSTRUCTIONS



1. Upper & Lower Shafts: 416 Stainless Steel
2. Body Coating: Fusion Bonded Nylon 11
3. Disc Encapsulation Material; SBR



SIZE	2.5"	3"	4"	6"	8"
A	1.81	1.81	2.05	2.21	2.36
AA	2.85	3.47	4.47	6.61	8.61
B	3.81	3.82	4.57	5.83	5.27
C	6.00	6.00	6.00	6.00	6.00
D	7.60	7.60	7.60	7.60	7.60
E	10.30	10.77	12.86	15.73	17.56
F	5.35	5.58	6.68	8.36	9.28
H	1.72	2.39	3.31	5.60	7.49
Wt.G	16	20	24	37	43
Wt.W	20	20	25	34	44

8" SIZE ONLY



PIPE CONNECTION SPECIFICATIONS

Figure 01G (Grooved End)

Pressure Rating:
End Connections:
Installation:

Fig. 01G - 300psi

Mating pipe and couplings to conform to ANSI/AWWA C606 for outside, groove, and gasket dimensions. For use with cut grooves in steel pipe of schedule 40 to 160.

Valves to be installed by person(s) certified by authority having jurisdiction to install grooved end fittings in a fire protection system.

1. Place gasket over pipe or fitting to which valve is to be joined.
2. Position valve against mating pipe or fitting.
3. Slide gasket into position on valve and install coupling according to coupling manufacturer's directions.

Figure 01W (Wafer End)

Pressure Rating:
End Connections:

Fig. 01W - 300psi

For installation between two ANSI B16.1, 125 pound flanges pipe schedule 10 to 80.

See diagram and chart above for minimum inside diameter of pipe.

1. Two flanged mating pieces should be placed at a distance apart that is slightly larger than the length of the valve (dim. "B")
2. A minimum of 2 studs should be placed, through adjacent flange holes, between which the lower trunnion of the valve will be placed.
3. Place valve between flanges so that lower trunnion and larger rib section fit between adjacent studs.
4. Place remaining studs around valve and tighten alternating sides until desired torque is reached.

SIZE	2.5"	3"	4"	6"	8"
Number of studs	4	4	8	8	8
Stud Size (in)	5/8	5/8	5/8	3/4	3/4
Stud Length (in. minimum)	5.5	5.5	6.5	7	7.5
Recommended Torque (minimum)	30	30	30	40	50