

TITAN

SIMPLEX BASKET STRAINER • FLANGED ENDS

Class 125 lb • Cast Iron

**BS 55-CI***(Shown with Clamped Cover)*

Clamped Cover Design:

- 2" ~ 4" designed with (1) Tee Bolt
- 6" designed with (2) Tee Bolts
- 8" ~ 12" designed with (4) Tee Bolts

Models:

BS 65-CI (Bolted Cover)

BS 55-CI (Clamped Cover)

Size Range: 2" thru 12"

WORKING PRESSURES & TEMPERATURE - NON-SHOCK

ANSI 125 lb Class	BS 65-CI	BS 55-CI
WOG (Water, Oil, Gas)	200 PSI @ 150 °F	200 PSI @ 100 °F
Saturated Steam	125 PSI @ 353 °F	Not Recommended
MAX Liquid	125 PSI @ 450 °F	Not Recommended

Features:

- TOP REMOVAL OF BASKET STRAINER SCREEN
- BOLTED (BS 65) OR QUICK CLAMP COVER (BS 55) AVAILABLE
- BOW-SHAPED BASKET HANDLE ASSURES TIGHT SEAL
- INLET AND OUTLET FLANGE BOSSES PROVIDED FOR GAUGE TAPS
- PLUGGED BOTTOM DRAIN/BLOW-OFF CONNECTION IS STANDARD ON BOTH MODELS
- OPTIONAL OPEN BOTTOM BASKET DESIGN ALLOWS FOR AUTOMATIC OR MANUAL BLOW-OFF VALVE INSTALLATION
- STRAIGHT THROUGH FLOW DESIGN RESULTS IN EXCEPTIONAL PRESSURE MAINTENANCE
- OPEN AREA IS MANY TIMES GREATER THAN CORRESPONDING PIPE SIZE ASSURES MINIMAL PRESSURE LOSS
- EPOXY PAINTING IS STANDARD
- USED FOR APPLICATIONS WHERE DEBRIS LOADING IS HIGH AND CONTINUOUS
- REMOVABLE LEG BRACKET SUPPORTS AVAILABLE ON LARGER SIZES

*Ideal Design for Applications Where Easy Maintenance
and Large Capacity are Required*

290 Corporate Drive
PO Box 7408
Lumberton, NC 28358

Titan Flow Control, Inc.
www.titanfci.com

Tel: 910-735-0000
Fax: 910-738-3848
titan@titanfci.com



TITAN FLOW CONTROL
LUMBERTON, NC USA

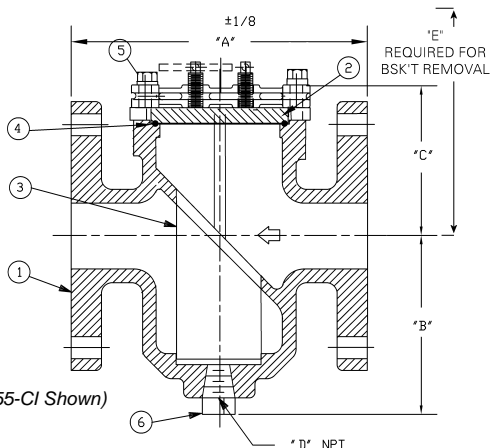
SIMPLEX BASKET STRAINER

BS 55-CI (CLAMPED COVER)

BS 65-CI (BOLTED COVER)

Flanged Ends • Flat Faced • Cast Iron

ANSI Class 125 lb



(4" BS 55-CI Shown)

BILL OF MATERIALS

No.	PART	BS 65-CI	BS 55-CI
1	BODY	CAST IRON ASTM A-126 Gr. B	
2	COVER	CAST IRON ASTM A-126 Gr. B	
3	BASKET*	304 STAINLESS STEEL	
4	GASKET*	NON-ASBESTOS	BUNA-N O-RING
5	CAP SCREWS	CARBON STEEL	
6	PLUGS BOSS/DRAIN	CAST IRON	

*Recommended spare parts

Notes:

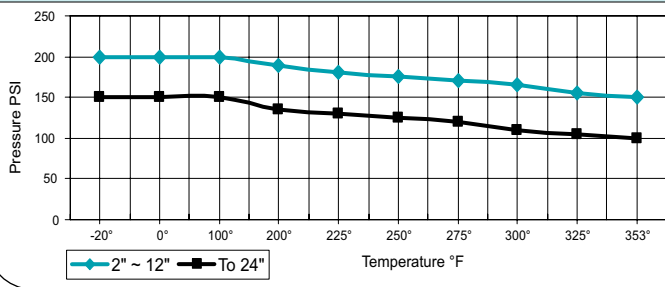
- 1/4" plugged NPT vent standard
- 1/4" plugged NPT gauge tap standard on 6" and larger

DIMENSIONS:

SIZE	in	2	2 1/2	3	4	5	6	8	10	12
	mm	50	65	80	100	125	150	200	250	300
A DIMENSION FACE TO FACE	in	8.62	7.56	8.75	11.18	12.50	14.00	17.12	22.00	25.25
	mm	219	193	223	284	318	356	435	559	642
B DIMENSION CTR. LINE TO BOTTOM	in	5.87	5.43	5.25	7.87	8.75	10.37	15.12	16.00	23.75
	mm	150	138	134	200	223	264	385	407	604
C DIMENSION CTR. LINE TO TOP	in	4.37	3.75	5.12	5.37	5.00	5.62	7.00	9.25	11.62
	mm	111	96	131	137	127	143	178	235	296
D DIMENSION NPT BLOW-OFF	in	1/2	3/4	3/4	3/4	3/4	1 1/4	1 1/2	1 1/2	2
	mm	15	20	20	20	20	32	40	40	50
E DIMENSION SCREEN REMOVAL	in	10.87	10.87	11.25	15.50	15.50	18.25	23.37	29.00	37.50
	mm	277	277	286	394	394	464	594	737	953
ASSEMBLED WEIGHT	lb	27.0	30.0	40.0	76.0	93.0	154.0	244.0	416.0	752.0
	kg	12.2	13.6	40.0	76.0	93.0	154.0	244.0	416.0	752.0
Flow Coefficient	C _v	43	84	130	290	490	780	1600	3300	5100

*Dimensions (inches) are rounded down to two decimal places.

PRESSURE AND TEMPERATURE CHART BS 55/65-CI ANSI 125



- 353 °F max. temperature of saturated steam at 125 psig.

TESTING:

Strainers are individually, hydrostatically tested at 1.5 x the 100 °F rating, rounded off to the next higher 25 PSI measurement .

WORKING PRESSURES & TEMPERATURE - NON-SHOCK

ANSI 125 lb Class	BS 65-CI	BS 55-CI
WOG (Water, Oil, Gas)	200 PSI @ 150 °F	200 PSI @ 100 °F
Saturated Steam	125 PSI @ 353 °F	Not Recommended
Max Liquid	125 PSI @ 450 °F	Not Recommended

STANDARD SCREEN SELECTIONS

Sizes	Water Service	Open Area	Steam	Open Area
2" ~ 4"	.0625 (1/16)	37%	.045 (3/64)	36%
5" ~ 12"	.125 (1/8)	40%	.045 (3/64)*	36%

*For 10" and above, consult factory on screen selections for steam.

APPLICABLE STANDARDS

Design	ANSI B16.1
Shell Wall Thickness	ANSI B16.1
Pressure vs. Temp. Rating	ANSI B16.1

Ordering Code: _____ Size: _____
 Customer/Project: _____
 Inq./P.O. No.: _____
 Titan Order No.: _____
 Certified By: _____ Date: _____



TITAN FLOW CONTROL, INC.
Engineering Specification Submittal

SIMPLEX BASKET STRAINER • BS 55-CI & BS 65-CI

Series	Size	Part No.	Material Trim Code	Drawing No.