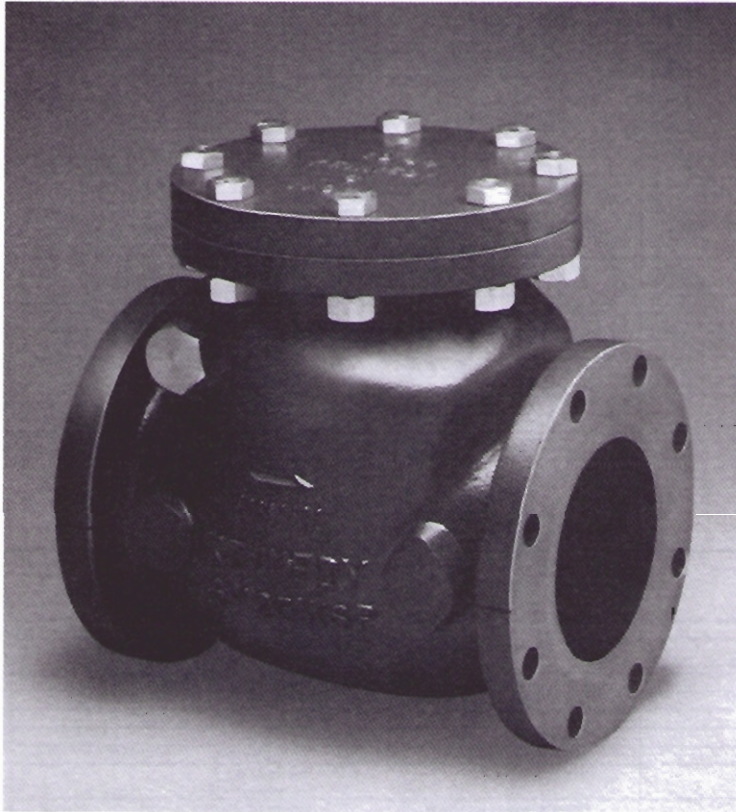


Kennedy Swing Check Valves

A.W.W.A. C508 was developed in 1976 to set a standard for the manufacture, testing and application of Iron Body Bronze Mounted (IBBM) Check Valves. The valves are designed with an iron body and include either metal-to-metal or composition-to-metal seating.

Kennedy Swing Check Valves are designed and manufactured in conformance with A.W.W.A. C508 and are for use on water, oil and gas lines. Under certain circumstances where it is desirable to have more positive control of the closing of the disc, the valves can be supplied with either lever-and-spring or lever-and-weight. For restricted spacing requirements Kennedy Valve manufactures a Wafer Check Valve that also helps to control water hammer.

Features



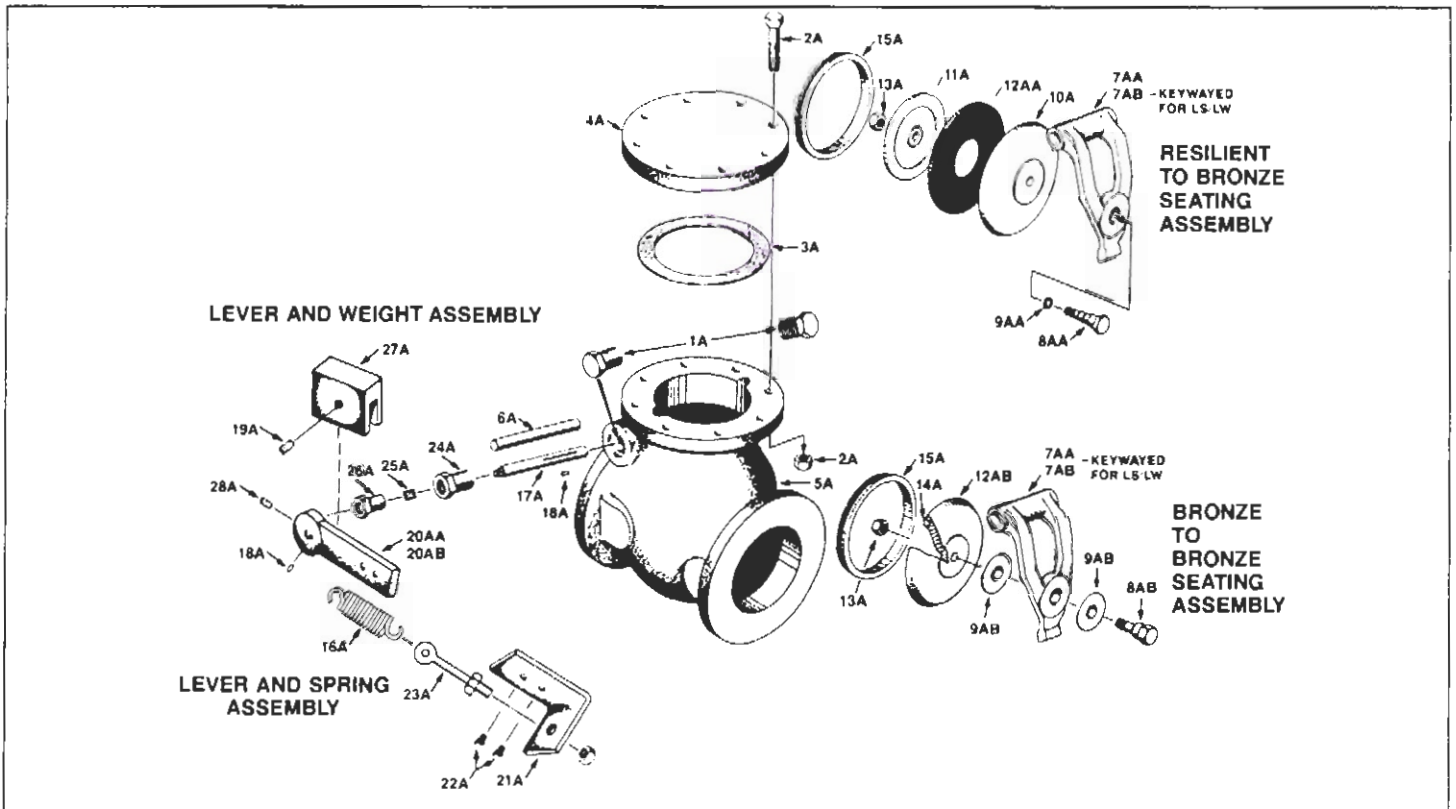
Swing Check Valve-AWWA

- Stainless steel hinge pin.
- Working parts are removable through the top of the valve.
- Tapped bosses available.
- Available with lever-and-spring or lever-and-weight.
- Double bronze side plug construction.
- Bodies are made of high strength cast iron with reinforced flanges - ANSI B 16.1/125 # flanges.
- May be installed in a vertical line with the flow up.
- Figure #106 Series
 - 2"-12"
 - Test Pressure - Seat and Shell 400 PSI
 - Working Pressure - non-shock CWP 200 PSI
 - 14"-24"
 - Test Pressure - Seat and Shell 300 PSI
 - Working Pressure - non-shock CWP 150 PSI

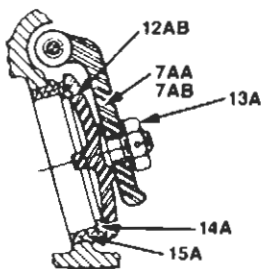
SWING CHECK VALVES 2"-12" TECHNICAL DATA & PARTS LIST

KENNEDY VALVE

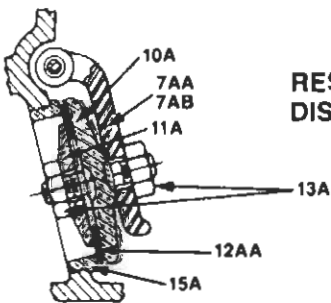
FIGURE #106/106LW/106LS/106AW/106AS



Disc Arrangement 2"-3"



**BRONZE
DISC**



**RESILIENT
DISC**

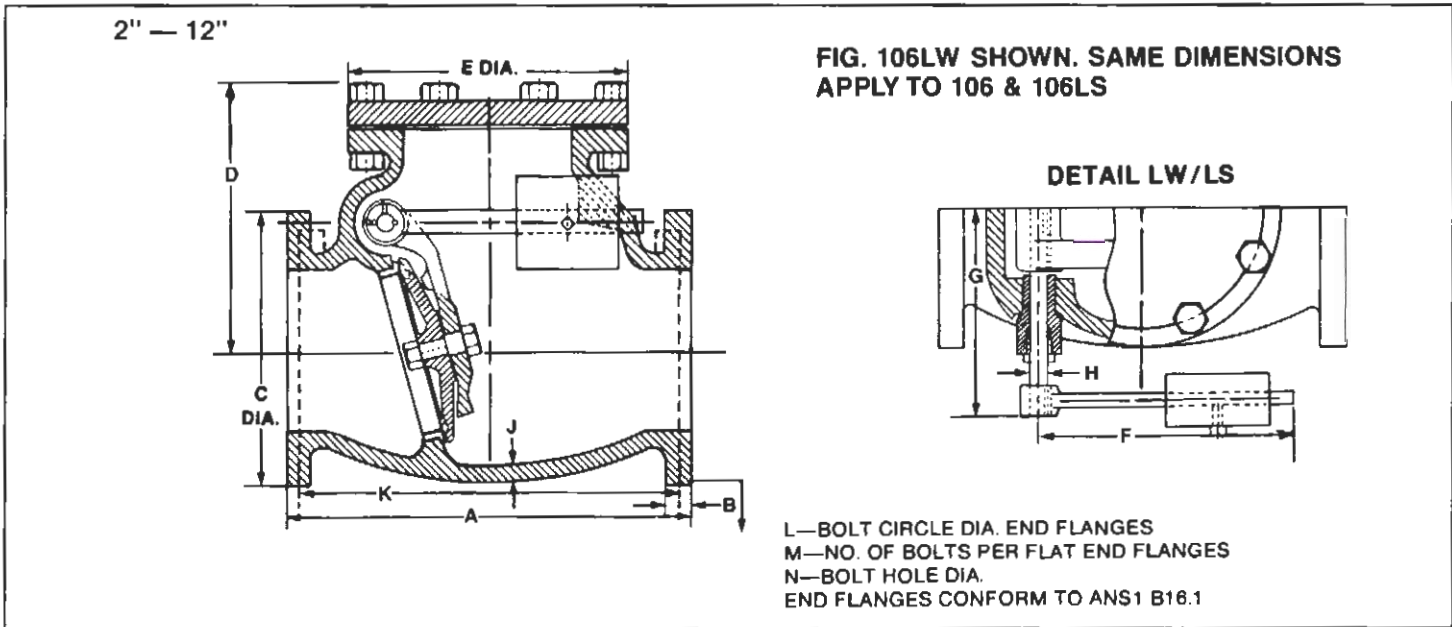
| Part No. | Qty | Description | Material & ASTM Spcs |
|----------|-------------|------------------------------|--|
| 1A | 2 | Side Plug | Bronze |
| 2A | 1 for LS/LW | Cap Bolts and Nuts | Rustproof Steel A-337 |
| 3A | 1 | Cap Gasket | |
| 4A | 1 | Cap | C.I. A-126 Cl.B |
| 5A | 1 | Body | C.I. A-126 Cl.B |
| 6A | 1 | Hinge Pin | SS A-276 (304) |
| 7AA | 1 | Hinge | Bronze (2"-3") D.I. A-536 (4"-12") |
| 7AB | 1 | Hinge w/keyway for LS/LW | Bronze (2"-3") D.I. A-536 (4"-12") |
| 8AA | 1 | Disc Bolt (4"-12")** | Bronze (10"-12") Steel (4"-8") |
| 8AB | 1 | Disc Bolt (4"-12")** | Bronze (10"-12") Steel (4"-8") |
| 9AA | 1 | Disc Bolt O-Ring (10", 12") | Syn. Rubber |
| 9AB | 2 | Disc Bolt Washer (4"-8") | |
| 10A | 1 | Disc Holder | Bronze (2"-3") C.I. A-126 Cl.B (4"-12") |
| 11A | 1 | Disc Plate | Bronze |
| 12AA | 1 | Disc | Syn. Rubber |
| 12AB** | 1 | Disc | Bronze (2"-8") C.I. A-126 Cl.B (4"-12") |
| 13A | 1 | Disc Jut | Rustproof Steel Bronze |
| 14AA** | 1 | Disc Ring (4"-12") | Bronze |
| 15A | 1 | Seat Ring | Bronze |
| 16A | 1 | Spring | Steel |
| 17A | 1 | Extended Hinge Pin for LS/LW | SS A-276 (304) |
| 18A | 2 | Key for LS/LW | SS A-276 (304) |
| 19A | 1 | Set Screw | Steel |
| 20AA | 1 | Lever Arm for LS | Steel |
| 20AB | 1 | Lever Arm for LW | Steel |
| 21A | 1 | Bracket | Steel |
| 22A | 2 | Hex Head Bracket Bolt | Steel |
| 23A | 1 | Eye Bolt and 2 Hex Nuts | Steel |
| 24A | 1 | Stuffing Box | Bronze |
| 25A | - | Packing | Graphite Filled |
| 26A | 1 | Gland | Bronze |
| 27A | 1 | Weight | C.I. A-126 Cl.B |
| 28A | 1 | Set Screw | Steel |

**See Q on page 6.

** Denotes that part is available only as part of an assembly.

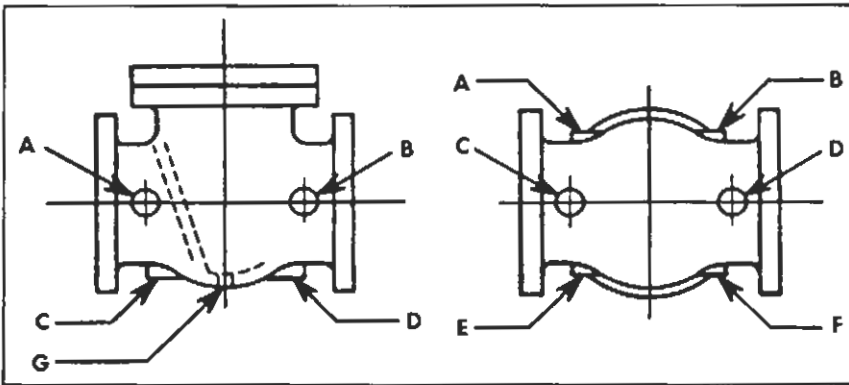
** Cast Integral (2"-3").

Dimensional Data 2"-12" 106/106LW/106LS



| SIZE | A | B | C | D | E | F | G | H | J | K** | L | M | N | C' |
|--------|-------|------|-------|-------|-------|-------|-------|------|-----|-------|-------|-----|------|----|
| 2" | 8.00 | .65 | 6.00 | 6.00 | 6.00 | 5.00 | 4.72 | .50 | .34 | 8.00 | 4 | .75 | 4 | |
| 2 1/2" | 8.50 | .72 | 7.00 | 6.62 | 7.00 | 5.25 | 4.94 | .50 | .41 | 8.50 | 5.50 | 4 | .75 | 4 |
| 3" | 9.50 | .78 | 7.50 | 7.06 | 7.50 | 6.00 | 5.34 | .50 | .44 | 9.50 | 6.00 | 4 | .75 | 4 |
| 4" | 11.50 | 1.00 | 9.00 | 8.31 | 9.00 | 7.75 | 8.19 | .62 | .50 | 11.50 | 7.50 | 8 | .75 | 8 |
| 5" | 13.00 | .94 | 10.00 | 8.31 | 10.00 | 8.90 | 8.50 | .62 | .62 | 11.50 | 8.50 | 8 | .87 | 8 |
| 6" | 14.00 | 1.06 | 11.00 | 10.06 | 11.00 | 9.75 | 9.00 | .75 | .62 | - | 9.50 | 8 | .87 | 8 |
| 8" | 19.50 | 1.25 | 13.50 | 12.38 | 13.50 | 14.13 | 10.18 | .87 | .75 | - | 11.75 | 8 | .87 | 8 |
| 10" | 24.50 | 1.31 | 16.00 | 13.93 | 16.75 | 18.00 | 11.62 | 1.00 | .81 | - | 14.25 | 12 | 1.00 | 12 |
| 12" | 27.50 | 1.37 | 19.00 | 16.18 | 19.00 | 18.00 | 13.75 | 1.00 | .87 | - | 17.00 | 12 | 1.00 | 12 |

| BODY MARKINGS | |
|---------------|-----------------|
| (ONE SIDE) | (OPPOSITE SIDE) |
| A.W.W.A. | FIG. NO. |
| KENNEDY | 200 W |
| CAP MARKINGS | |
| YEAR | |
| KENNEDY | |
| SIZE | |



BOSS AND DRAIN TAPPING SCHEDULE

| VALVE SIZE (In.) | 2-3 1/2 | 4-5 | 6, 8, 10, 12 |
|---------------------------------|---------|-------|--------------|
| MAX. SIZE PIPE TAP (NPT) | 3/4 | 1 1/4 | 2 |

When ordering Check Valves tapped for by-pass or drain, specify exact location and size of tap using letters above for boss designation. These locations of drain and by-pass tappings conform to the Manufacturers Standardization Society Specification SP-45-1953.