



1040 N. Meridian Rd., P.O. Box 1556, Youngstown, Ohio 44501
 Phone: (330) 799-3333 Toll Free: 1-800-677-1799 FAX: (330) 797-3215

www.trumbull-mfg.com

TRUMBULL MUD VALVES

Rising Stem and Non-Rising Stem Styles

Trumbull Mud Valves are designed primarily for use in settling tanks of waste water treatment plants. They are for low pressure applications only; their intended use is to drain tanks for maintenance or cleaning.

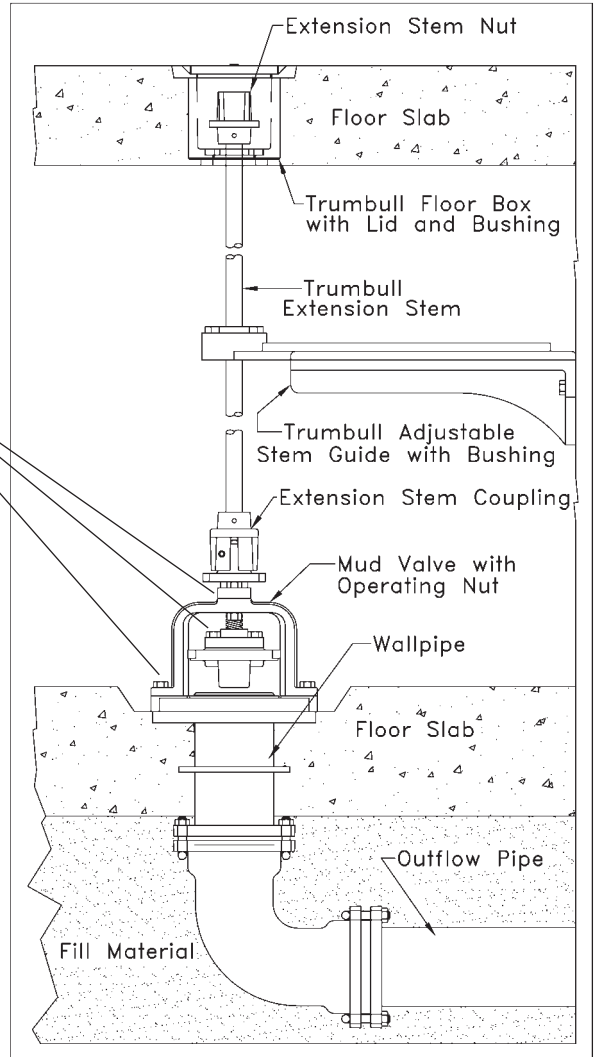
Mud valves are furnished with a 2" square operating nut; however, they can be supplied with optional extension stem or handwheel.

This valve series uses brass seats in the body and gate. The cast iron body assembly features manganese bronze stems and guides for use in submerged installations. The fasteners are furnished in stainless steel to prevent corrosion from years of service, submerged in sewage.

Note: The flange drilling is according to ANSI 125# STD. on all sizes; however, one hole under each leg of the yoke is not available for fastening to the mating flange.

Bolts and nuts for mounting to floor pipe are not furnished unless ordered separately.

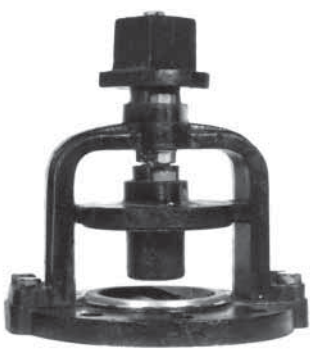
See separate literature on Trumbull Floor Boxes, Extension Stems and Stem Guides.



Typical installation of a Mud Valve in a system.



Rising Stem



Non-Rising Stem

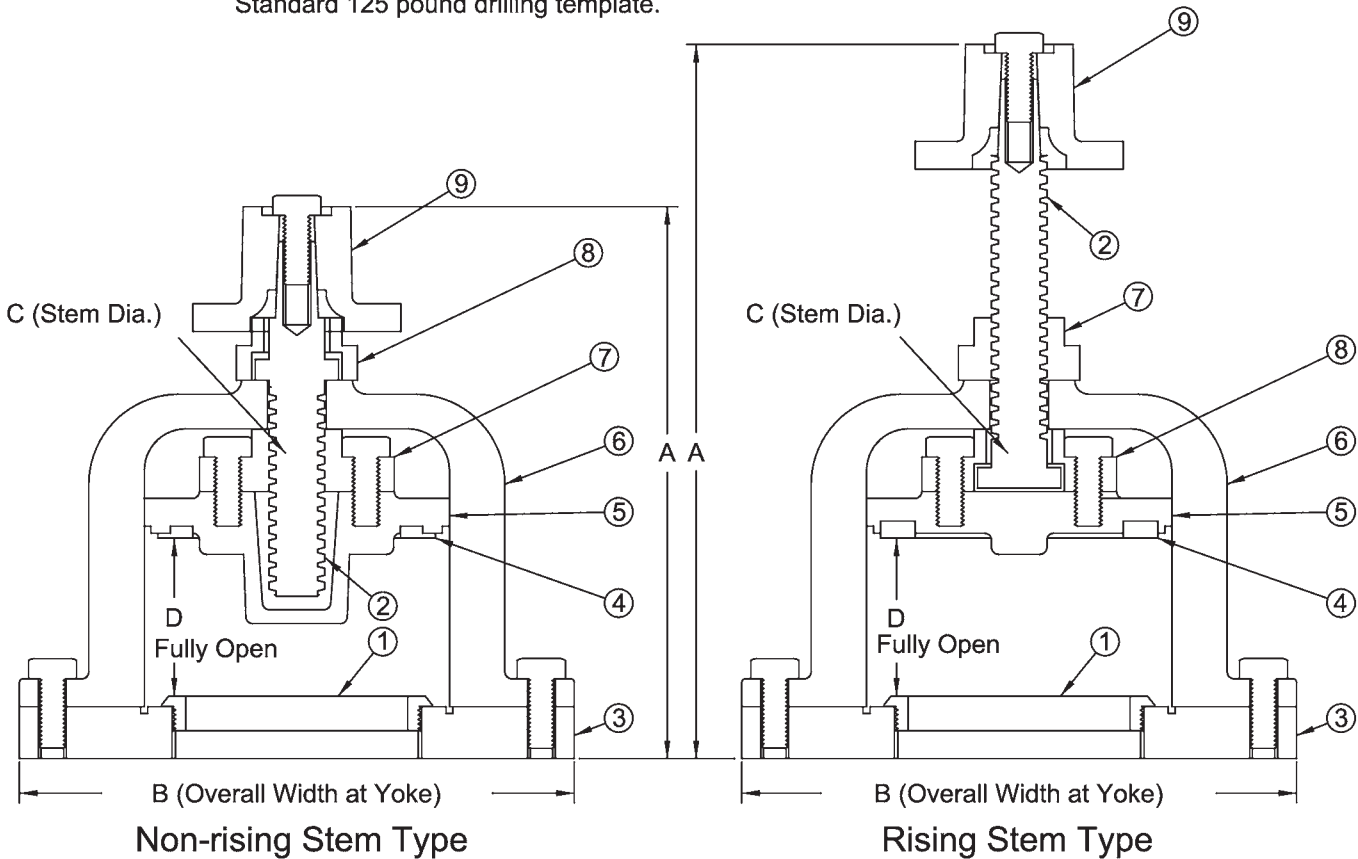
<u>Size</u>	<u>Non-Rising Stem</u>	<u>Weight</u>	<u>Rising Stem</u>	<u>Weight</u>
4"	367-1415	35#	367-1420	35#
6"	367-1416	55#	367-1423	50#
8"	367-1418	95#	367-1425	85#
10"	367-1428	152#		
12"	367-1430	228#		

Mud Valves also available in Stainless Steel. Please Inquire.

See reverse side for drawing.

	Valve Size				
	4	6	8	10	12
A (open height), NRS	9-1/2	10-1/2	11-3/4	14-1/2	15-3/4
A (open height), RS	13-3/8	15-1/2	16-1/2	-	-
B (overall width at Yoke)	10	12-1/4	14-1/2	17	19-3/4
C (Stem Diameter)	1	1-1/8	1-1/4	1-3/8	1-1/2
D (Gate rise)	2-9/32	3-1/2	4-1/8	4-1/4	4-3/4
Flange O.D.	9	11	13-1/2	16	19
Bolt Circle	7.5	9.5	11.75	14.25	17.0
Bolt Hole Dia.	3/4	7/8	7/8	1	1
Turns to Open	5-1/2	8	9	12-1/2	16

Standard 125 pound drilling template.



Notes:

Materials:

- 1 - Body Seal - ASTM B584 / UNS C83600 Red Brass
 - 2 - Stem - ASTM B584 / UNS C86400 Manganese Bronze
 - 3 - Body - Gray Cast Iron, Class 30
 - 4 - Gate Seal - ASTM B584 / UNS C83600 Red Brass
 - 5 - Gate - Gray Cast Iron, Class 30
 - 6 - Yoke - Gray Cast Iron, Class 30
 - 7 - Threaded Guide - ASTM B584 / UNS C86400 Manganese Bronze
 - 8 - Plain Guide - Gray Cast Iron, Class 30
 - 9 - Operating Nut - Gray Cast Iron, Class 30
- Fasteners - Stainless Steel, Type 316

Finished with black rust preventive coating

Drawn:	Drawing Revision:	Trumbull Industries P.O. Box 1556 1040 N. Meridian Rd. Youngstown, Ohio 44501	Drawn to Scale
Date 6/28/94	Rev. Date N 10/06/06		MUD VALVES Non-rising and Rising Stem